

Omaha

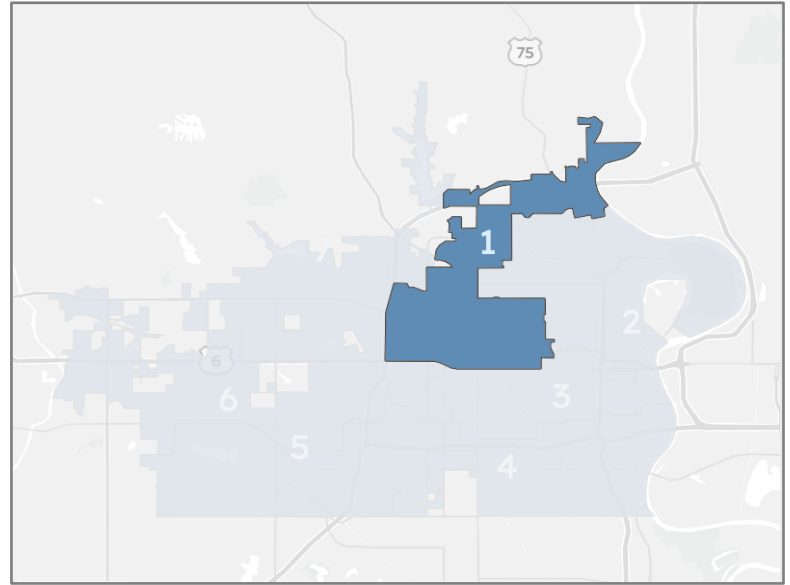
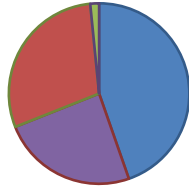
District 1

Current Registration and Representation

Current Councilmember: Pete Festersen
 Total Registered Voters*: 47,155
 Voted in 2020 General: 34,863
 Registered Voter Turnout: 73.9%

All Voters by Party Registration

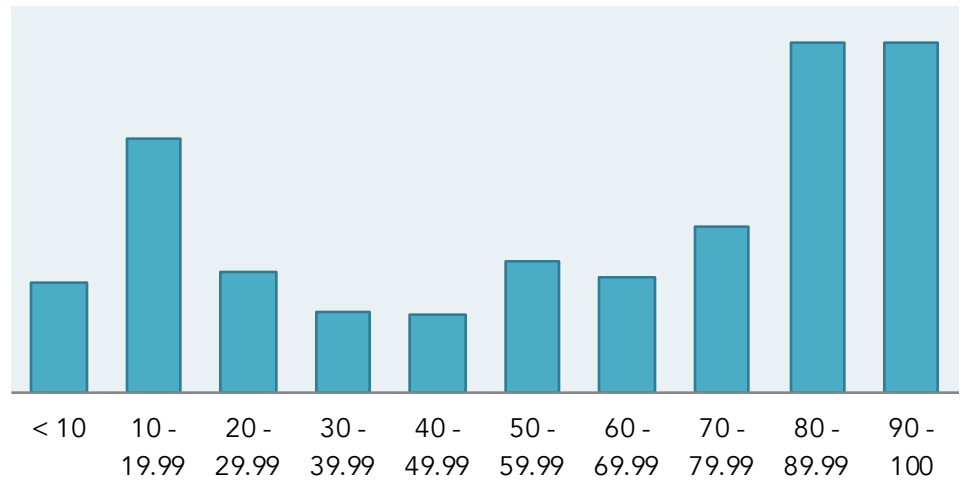
Party	Voters	% of Voters
Democrats	21,054	44.6%
Nonpartisan	11,474	24.3%
Republicans	13,884	29.4%
Other	743	1.6%



All Voters by DNC Support Score

Score Range	Voters	% of Voters
< 10	2,844	6.3%
10 - 19.99	6,606	14.5%
20 - 29.99	3,101	6.8%
30 - 39.99	2,104	4.6%
40 - 49.99	2,017	4.4%
50 - 59.99	3,403	7.5%
60 - 69.99	2,988	6.6%
70 - 79.99	4,287	9.4%
80 - 89.99	9,025	19.9%
90 - 100	9,041	19.9%

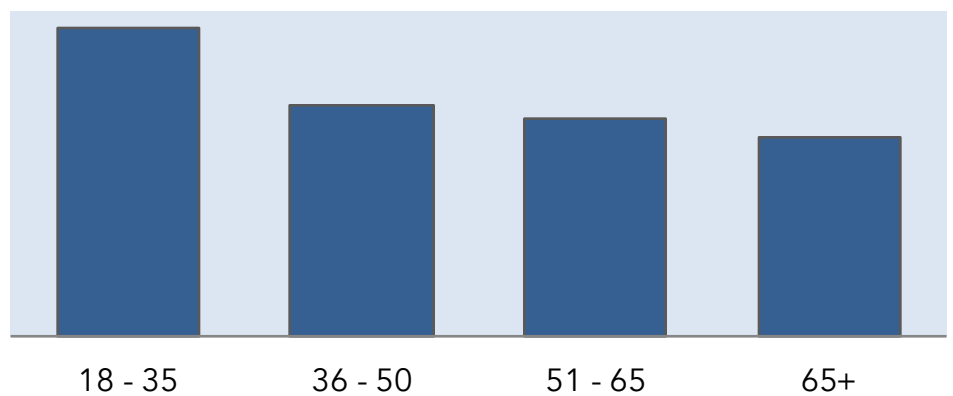
2020 Democratic Party Support Score Distribution



Voters by Age Group

Age	Voters	% of Voters
18 - 35	15,167	32.2%
36 - 50	11,411	24.2%
51 - 65	10,755	22.8%
65+	9,822	20.8%

Age Distribution



Voters by Likely Race/Ethnicity

Ethnicity	% of Voters
AAPI	1.7%
Black	11.1%
Latinx	2.7%
Native	0.0%
White	84.4%

- AAPI
- Black
- Latinx
- Native
- White

Ethnicity/Race Breakdown



*Includes active and inactive registered voters
 All data sourced from DNC Phoenix and Votebuilder