

Omaha

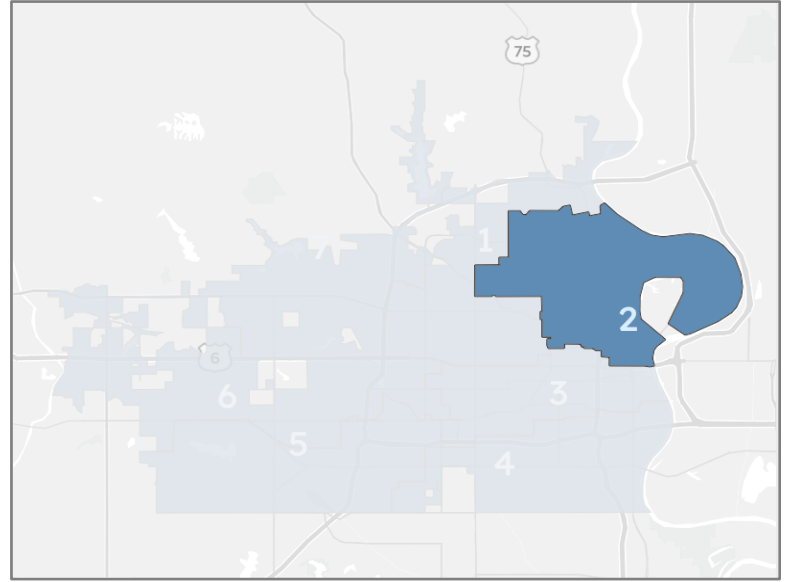
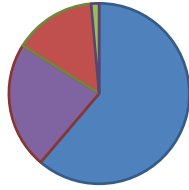
District 2

Current Registration and Representation

Current Councilmember: Ben Gray
 Total Registered Voters*: 39,436
 Voted in 2020 General: 22,242
 Registered Voter Turnout: 56.4%

All Voters by Party Registration

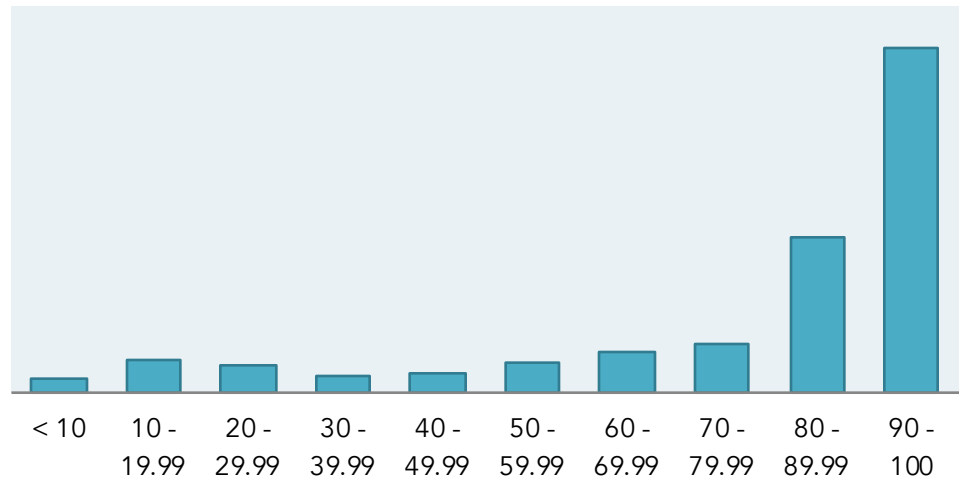
Party	Voters	% of Voters
Democrats	24,139	61.2%
Nonpartisan	8,949	22.7%
Republicans	5,786	14.7%
Other	562	1.4%



All Voters by DNC Support Score

Score Range	Voters	% of Voters
< 10	675	1.8%
10 - 19.99	1,706	4.5%
20 - 29.99	1,388	3.7%
30 - 39.99	930	2.5%
40 - 49.99	935	2.5%
50 - 59.99	1,576	4.2%
60 - 69.99	2,081	5.5%
70 - 79.99	2,467	6.6%
80 - 89.99	8,003	21.3%
90 - 100	17,793	47.4%

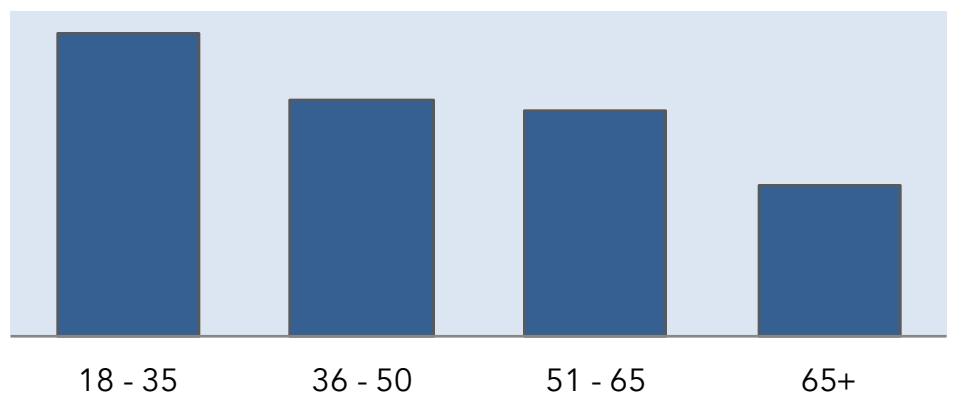
2020 Democratic Party Support Score Distribution



Voters by Age Group

Age	Voters	% of Voters
18 - 35	13,064	33.1%
36 - 50	10,183	25.8%
51 - 65	9,727	24.7%
65+	6,462	16.4%

Age Distribution



Voters by Likely Race/Ethnicity

Ethnicity	% of Voters
AAPI	1.9%
Black	55.3%
Latinx	4.4%
Native	0.1%
White	38.2%

- AAPI
- Black
- Latinx
- Native
- White

Ethnicity/Race Breakdown



*Includes active and inactive registered voters
 All data sourced from DNC Phoenix and Votebuilder